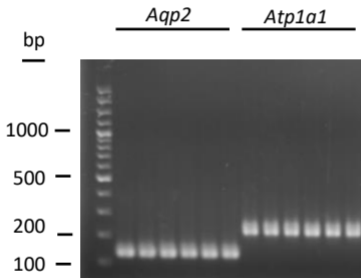


A

Target Gene	Amplicon Size (bp)	Forward Primer (5'-3')	Reverse Primer (3'-5')
<i>Aqp2</i>	126	CTTCCTTCGAGCTGCCTTC	CATTGTTGTGGAGAGCATTGAC
<i>Atp1a1</i>	215	GGCGCTCTTAAAGTGCATCG	TGCCGTGGAGGAGGATAGAA

B

Supplemental Figure 1. Primer sequences for RT-qPCR. Primer sequences for RT-qPCR Primer sequences and expected amplicon size for each transcript target are listed in **(A)**. Primer specificity was tested by regular PCR using cDNA extracted from cortex samples in rats administrated with lipopolysaccharide (LPS) or 0.9% saline (vehicle) prior RT-qPCR. An agarose gel image **(B)** shows the amplicon size for each indicated primer-pair.